



Centinela Valley Union High School District



Measure CV Program Update
December 9, 2013

Site Construction Progress Site Updates

- ❖ Hawthorne High School
- ❖ Lawndale High School
- ❖ Leuzinger High School

Hawthorne High School

Community Oversight Committee Status Report November 2013



11-2013

Hawthorne High School

Building A & B – Rendering of Counseling and Student Services & Media Center



Building A

Building B



Hawthorne High School

Building C - Sciences Building

Rendering



View from the corner of El Segundo and Inglewood intersection

- 10 Biology Classrooms
- 3 Chemistry Labs
- 1 Physics Classroom
- Workrooms

Construction in progress



Hawthorne High School

Phase 1B – Buildings D



Grading courtyard around buildings B & C

Brown coat, primed, & finished color plaster coat



Hawthorne High School

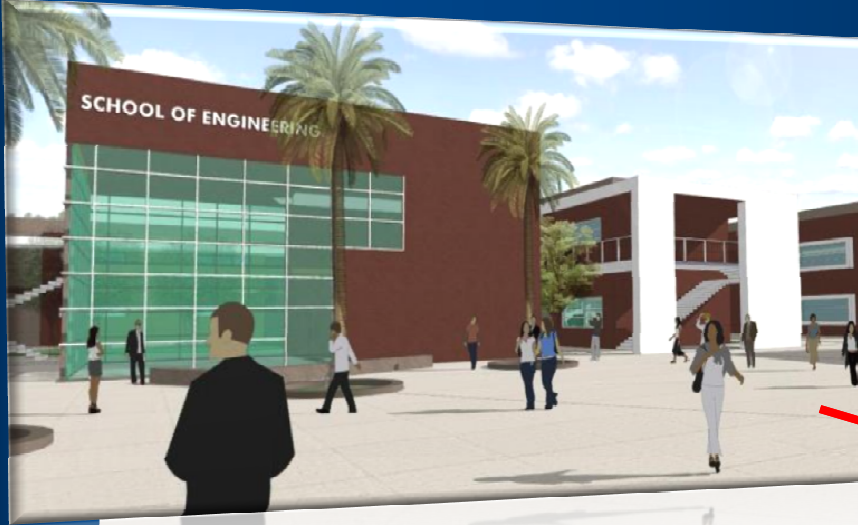
Building C – Media Center and Science Building

Casework Installation & Concrete Staining

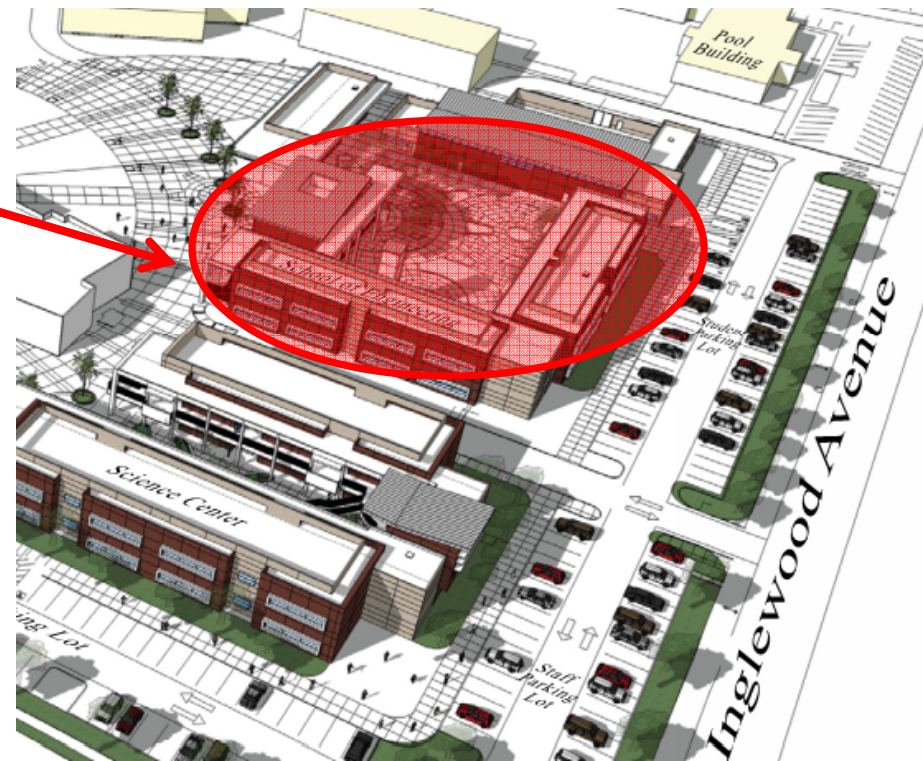


Hawthorne High School

Phase 1B – Building D – Engineering Building



- 16 Classrooms
- Gallery
- 2 Robotic Rooms
- Professional Development Room



Hawthorne High School

Phase 1B – Buildings D - Engineering Building



Steel Framing for Engineering Classrooms

Hawthorne High School

Phase 1B – Building D – Engineering Building

Erecting & Welding Steel Columns and Beams at Building D



Hawthorne High School

Phase 1B – Buildings E – Engineering Shops & Engineering Academies



Prepared footings at Building E
Received Shipment of Steel
& Started Erecting Columns
for Building E

Lawndale High School

Student Services Building - Aerial



Lawndale High School

Student Services Building



The building will have Administration, Library and Campus Security spaces including 43 teaching stations which include standard classrooms, science laboratories, AVID Classrooms, Digital and media arts.

Construction for the Phase 1 Student Services Building started in October 2012. The Building along with the Outdoor Quad area will be complete by August 2014. Building will be ready for the 2014-15 school year.



Lawndale High School

Student Services Building - Underground Utilities

Underground utility work ongoing with the storm water drain installation continuing from the North East corner of the site towards the South.

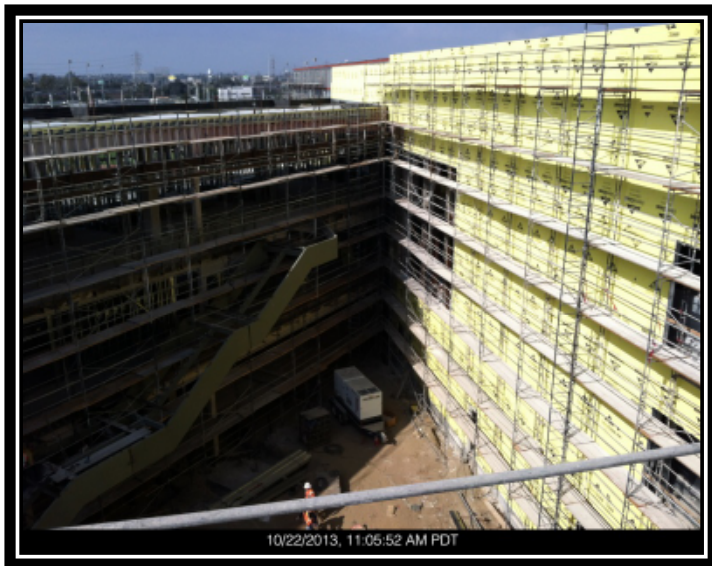


Electrical gear has been set in the Utility Yard and Cables have been pulled into the building Electrical Rooms and tied into the units. The yard will enclose the relocated electrical gear and gas meter.

Lawndale High School

Student Services Building – Envelope and MEP

Exterior light gauge framing and dens glass shell is complete. Mechanical, Electrical, Plumbing rough-in is near complete on all three floors with testing and inspection ongoing by an independent special inspections company.



Lawndale High School

Student Services Building- Structural Steel Stairs and Roof

Stairs 1 thru 4 have been installed. Roof work including metal decking, mechanical equipment pads, MEP sleeving, roof drains, parapet framing, and roof membrane is complete.



Leuzinger High School

Existing Site



Leuzinger High School Phase II

2 Story Classroom & Dining Facility



Segment A exterior lathe installation ongoing.

1st floor and 2nd floor interior drywall and communications cabling installation near completion.

Modified built up roof system is 95% complete.

Electrical and data rooms are dry-walled and painted, transformers and panels are being installed.



West Stair welding is completed. Guard rails have been placed.

Leuzinger High School Phase II

2 Story Classroom & Dining Facility



Middle building, Segment B, exterior DensGlass is 95% complete.

Kitchen drywall is ongoing, kitchen equipment has been delivered. Refrigeration unit installation has begun.

HVAC system ductwork has been placed, electrical connections are ongoing

Communications cabling is nearing completion.



Leuzinger High School Phase II

2 Story Classroom & Dining Facility



Building C duct work has been completed.

Electrical transformer has been placed in 1st floor electrical room.

Exterior and interior framing of C is 95% complete.

Site-work and fire-road ongoing.

